

PRACTICABLE DE SECCIÓN 40 mm.

Carpintería abatible para puertas y ventanas;

CARACTERÍSTICAS TÉCNICAS.

Carpintería practicable

- Sección de marco: 40 mm.
- Sección de hoja: 40 mm.
- Máximo acristalamiento: hasta 27,5 mm.

CLASIFICACIÓN OBTENIDA.

Permeabilidad al aire **CLASE 3** * UNE EN 1026 – EN 12207

Estanqueidad al agua **CLASE 6A** * UNE EN 1027 – EN 12208

Resistencia al viento **CLASE C5** * UNE EN 12211 – EN 12210

Transmitancia térmica «Uw» Ventana **3,7 W/m² K** ** UNE EN ISO 10077-1

Aislamiento acústico **31 (-1;-4)dB** *** UNE EN 10140-2:2011

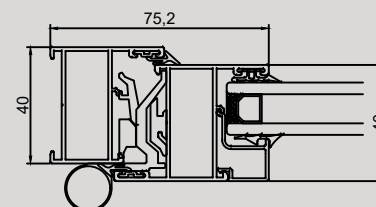
Capacidad para soportar cargas **APTO** UNE EN 14609:2004

* Ventana de 2 hojas de 1230 x 1480 mm.

** Ventana de 2 hojas de 1480 x 2180 mm; cajón persiana vidrio 4/104

*** Ventana de 2 hojas de 1230 x 1480 mm.; vidrio 4/10/4

SECCIÓN 2D



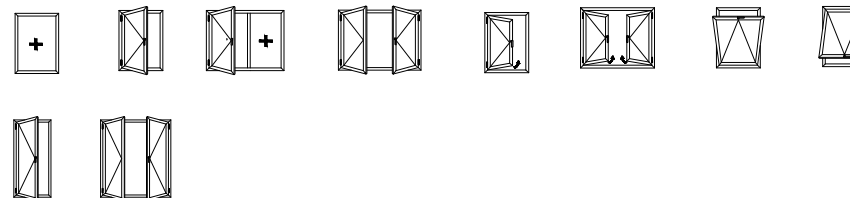
PESOS Y MEDIDAS MÁXIMAS

- Apertura Practicable:
Peso por hoja: 120 Kg
- Medidas máximas por hoja:
1700 mm x 2500 mm.

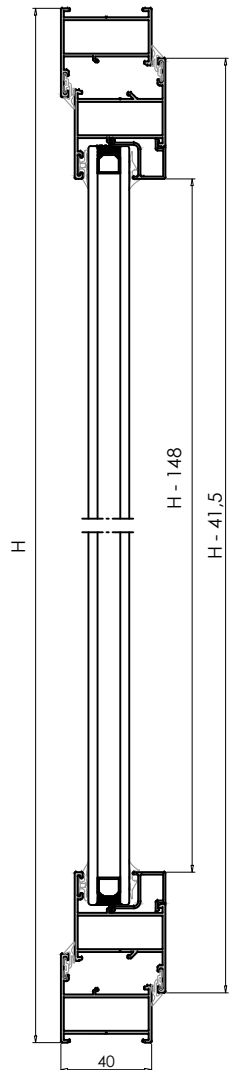


IMAGEN 3D

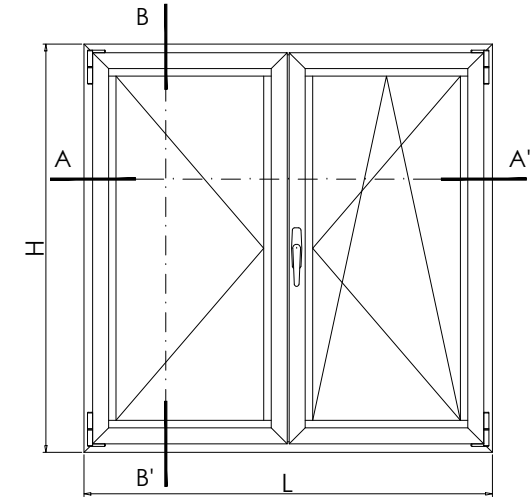
POSIBILIDADES DE APERTURA



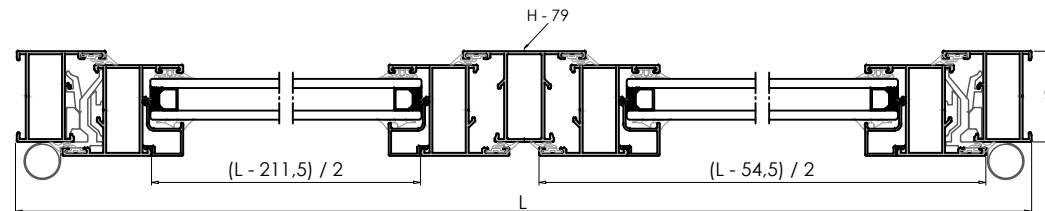
SECCION B - B'



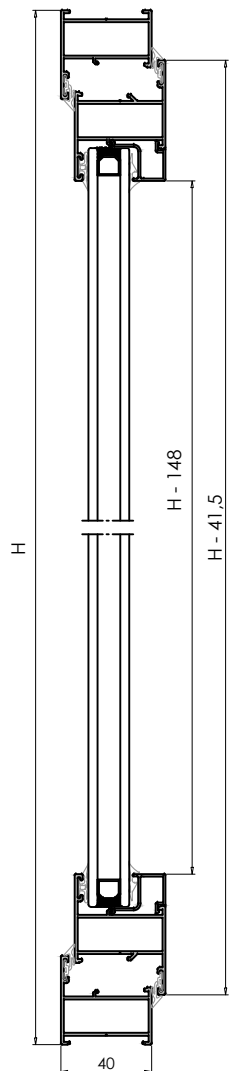
PERFIL	Ref. / DENOMINACION		Uds. / Corte		
I	3700	MARCO VENTANA	2	L	
			2	H	
II	3710	HOJA VENTANA	4	$(L - 54,5)/2$	
			4	H - 41,5	
III	3720	TRAVESAÑO VENTANA	1	H - 79	
R	Según Vidrio	JUNQUILLO	4	$(L - 211,5)/2$	
			4	H - 148	



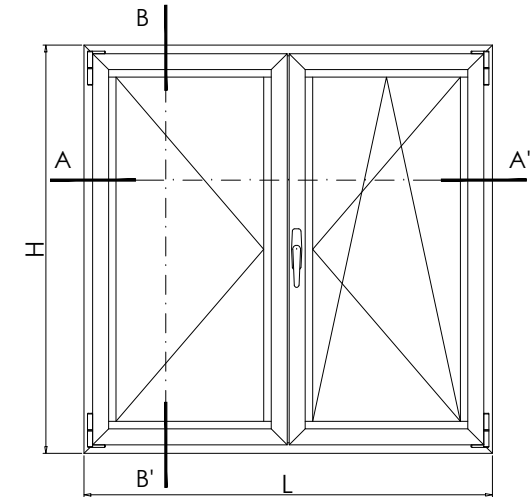
SECCION A - A'



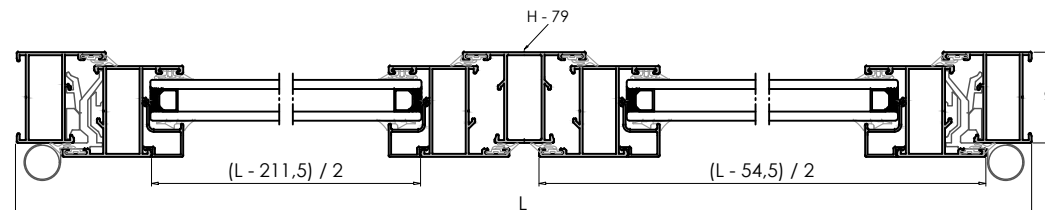
SECCION B - B'

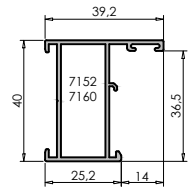


PERFIL	Ref. / DENOMINACION		Uds. / Corte		
	3700	MARCO VENTANA	2	L	
			2	H	
	3710	HOJA VENTANA	4	$(L - 54,5) / 2$	
			4	H - 41,5	
	3720	TRAVESAÑO VENTANA	1	H - 79	
	Según Vidrio	JUNQUILLO	4	$(L - 211,5) / 2$	
			4	H - 148	

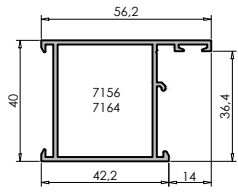


SECCION A - A'

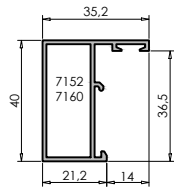




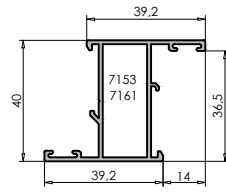
3700



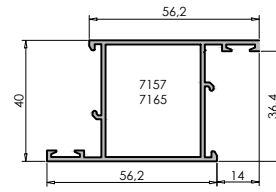
3750



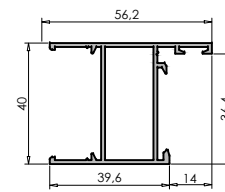
3721



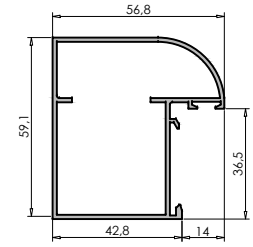
3710



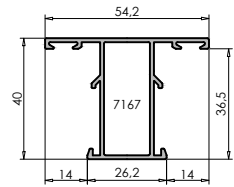
3755



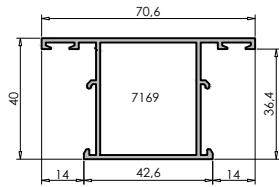
3781



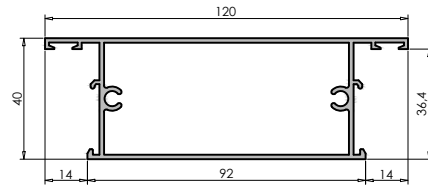
3787



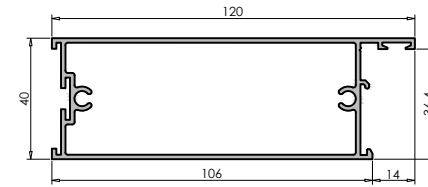
3720



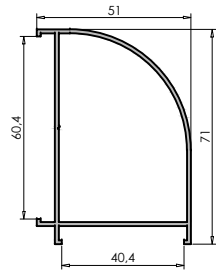
3760



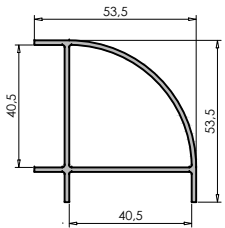
3765



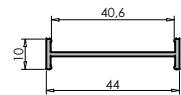
3768



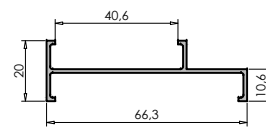
3849
(506)



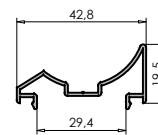
3847
(630)



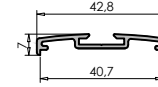
3802
(646)



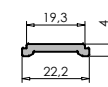
2031
(583)



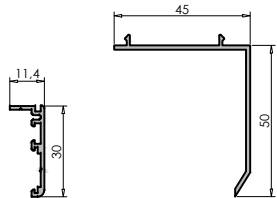
3850
(148)



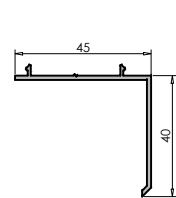
3846
(142)



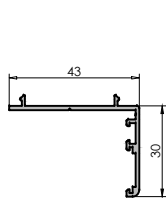
3741



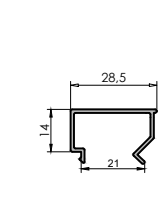
2181
(281)



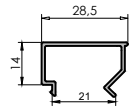
3775



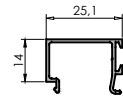
3719



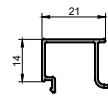
3777



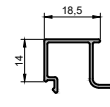
3735



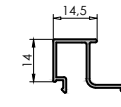
3725



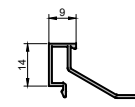
3743



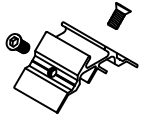
3745



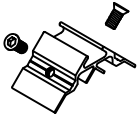
3730



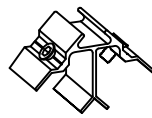
3732



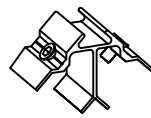
7152
ESCUADRA T.CENTRADA



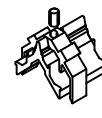
7153
ESCUADRA T.DESCENTRADA



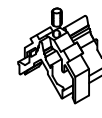
7156
ESCUADRA PUERTA T.CENTRADA



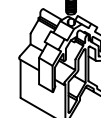
7157
ESCUADRA PUERTA T.DESCENTRADA



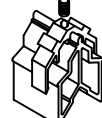
7160
ESCUADRA T.CENTRADA



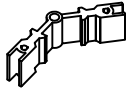
7161
ESCUADRA T.DESCENTRADA



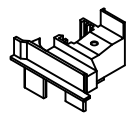
7164
ESCUADRA PUERTA T. CENTRADA



7165
ESCUADRA PUERTA T.DESCENTRADA



7173
ESCUADRA ÁNGULO VARIABLE



7201
JUEGO TAPA INVERSOR



4035
EMBELLECEDOR SALIDA DE AGUA



7798
CEPILLO VAIVEN



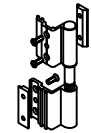
7167
TACO PILASTRA VENTANA



7169
TACO PILASTRA PORTADA



7715
GOMA CERCO HOJA



7008
BISAGRA DESLIZANTE CON REGLETA



7037
KIT CREMONA



7034
KIT CREMONA APERT. EXTERNA



7033
CREMONA APERT. EXTERIOR



7036
CREMONA SAN ANTONIO



7107
MANILLA RECUPERABLE



7059
CIERRE PRESIÓN GRANDE



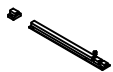
7081
CIERRE GOLPETE



7082
BISAGRA COMPÁS



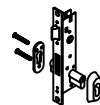
7032
PASADOR PLANO ANCHO NYLON



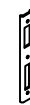
7048
PASADOR 200 mm



7049
PASADOR 300 mm



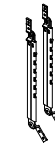
7644
CERRADURA DE GANCHO C/ RESB.



7056
CERRADERO GRANDE



7055
CERRADERO PEQUEÑO 210



7083
BISAGRA COMPÁS REGULABLE